

DVMR-16+ * Remote Access notes

TCP/IP setup

[IP CONFIG SETUP]



1.[MAC ADDRESS]

- Indicate the DVR's MAC address. MAC address is not editable.

2.[IP ADDRESS]

- Set up the DVR's IP address.

3.[IP PORT]

- Set up IP Port.

4.[GATEWAY]

- Set up GATEWAY.

5.[SUBNET MASK]

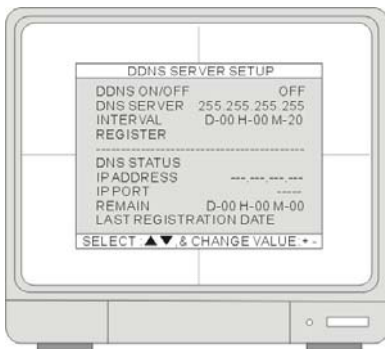
- Set up SUBNET MASK.

6.[DHCP SETUP]

- Inditcate the DHCP mode is set to Manual or Automatic. When DHCP is set to Automatic, you can not change any IP settings in this page. To turn off the DHCP automatic detection, exit this page and go to DHCP SETUP to change the setting.

[DDNS SETUP]

www.allthings.com.au



DDNS IP: 59.124.143.151

1.[DDNS ON/OFF]

- Press ENTER to turn ON and OFF the function.

2.[DNS SERVER]

- Set up DNS Server's IP address. Press ENTER to enter the selection. Use ▲ ▼ to move the cursor and [+] [-] or J.Shuttle to change the value. Press ENTER to confirm the settings and exit the selection.

3.[INTERVAL]

- Set up an interval for the DVR to report its IP address to the DDNS server automatically. (D- day / H- hour / M- minute). Press ENTER to enter the selection and [+] [-] or J.Shuttle to change the value. Press ENTER to confirm the settings and exit the selection.

4.[REGISTER]

- Connect to DDNS server and register the DVR information to the server. Press ENTER to start the registration.

5.[DNS STATUS]

- Indicate the current status of DDNS connection

IP ADDRESS: Indicate the current IP address recorded in the server

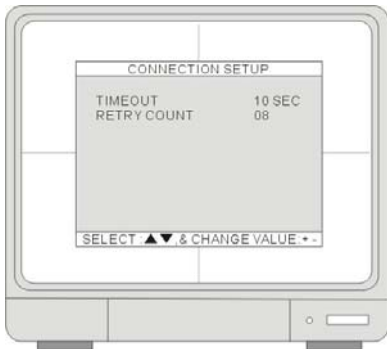
IP PORT: Indicate the current IP port recorded in the server.

REMAIN TIME: Indicate the remaining time to report to the server.

6.[LAST REGISTRATION DATE]

- Indicate the time of the last registration.

[CONNECTION SETUP]



Use ▲ ▼ to select and [+] [-] or J.Shuttle to change the value.

1.[TIMEOUT]

- Set up the remote connection response time, if the client does not receive responses from the DVR for certain duration, the client will disconnect the connection and try again. The setup range is from 1 millisecond to 12,750 seconds.

2.[RETRY COUNT]

www.allthings.com.au

- Set up the times that the client tries to reconnect to the DVR. The client will quit trying to reconnect to the DVR after all the attempts fail. The setup range is from 0 to 20 attempts.

[DHCP SETUP]

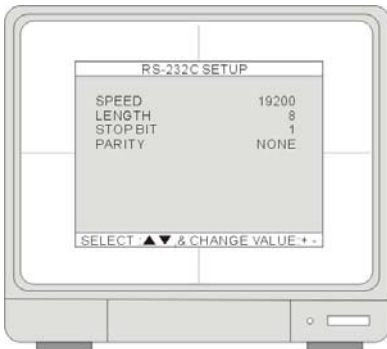


1.[DHCP MODE]

- Press ENTER to switch DHCP to [AUTOMATIC].

2.[DETECT IP]

- Move the cursor to DETECT IP and press ENTER to start. Press MENU to cancel the detection.



Network and client software

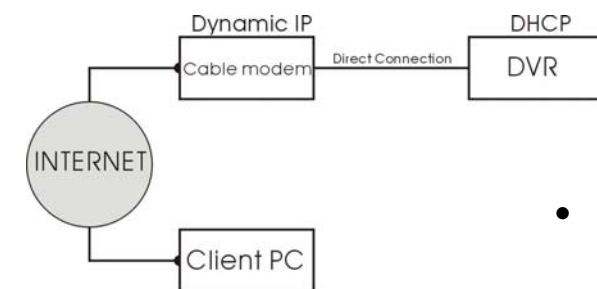
Network Introduction

- Users have to identify what kind of Internet access they have before they set up the DVR's network parameters. DSL and cable modem are the most popular broadband technologies.
- ADSL- Asymmetric Digital Subscriber Line
ADSL is one of xDSL technologies, transmitting digital data over the wires of a local telephone network. Typically, the download speed of DSL ranges from 128 kilobits per second (kbit/s) to 24,000 kbit/s depending on DSL technology and service level implemented. Upload speed is lower than download speed. ADSL is the most popular broadband technology, followed by Cable Modem.
- Cable Modem(or Cable) www.allthings.com.au
Cable Modem, Cable Internet Access, or simply Cable is to deliver the Internet Service over a coaxial cable line, which can be the cable of your Cable TV. The bandwidth of Cable ranges from 3 Mb to 15 Mb, or more. The upload bandwidth usually ranges from 384kb to 2Mb, or more. However, the connection speed may drop when many people are using the service at the same time

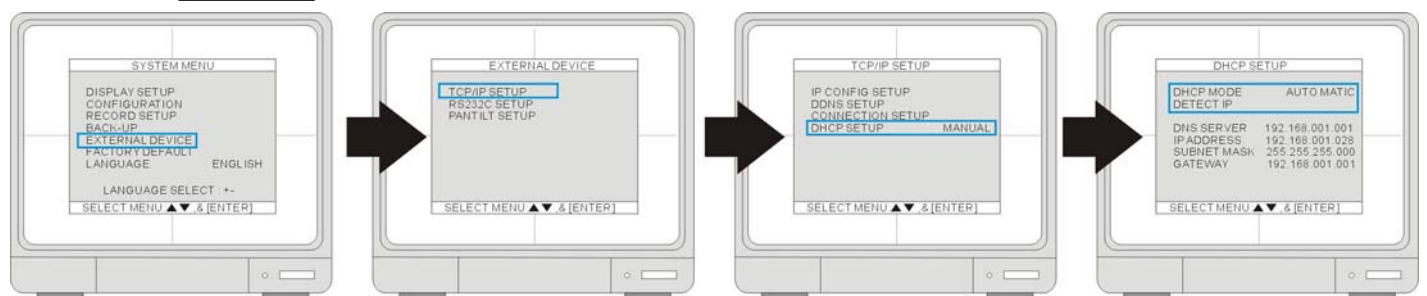
www.allthings.com.au

Network installation and setup

Via Cable



- Connect the Network cable of Cable Modem output to DVR



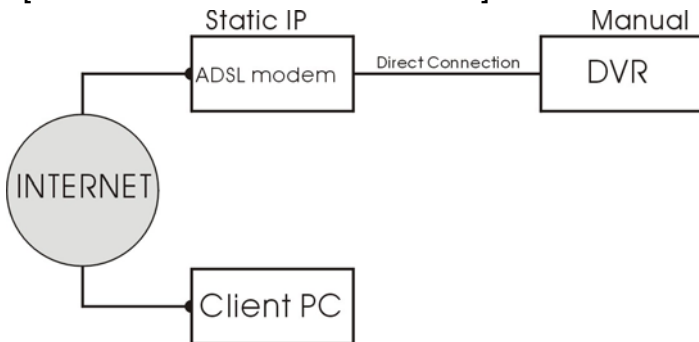
- Enter [SYSTEM MENU] ► [EXTERNAL DEVICE] ► [TCP/IP SETUP] ► [DHCP SETUP] ► [DHCP MODE].
Place the cursor at DHCP MODE and press ENTER to switch the DHCP MODE to [AUTOMATIC]. Then, move the cursor over [DETECT IP] and press ENTER to detect IP. DVR will automatically get the IP ADDRESS, SUBNET MASK, and GATEWAY from the Cable Modem and shows the IP information on the DVR.
- Press MENU and go back to the previous setup page, [TCP/IP SETUP]. Go to [IP CONFIG SETUP] to set up the port number. You can either use the default port number or assign a new one.

Via ADSL

- First, identify if you have Static IP or Dynamic IP service. If you do not know, ask your ISP (Internet Service Provider). If you have Static IP, your ISP should provide you a static IP address, which will never change even when you reboot your modem.

[Via ADSL with Static IP address]

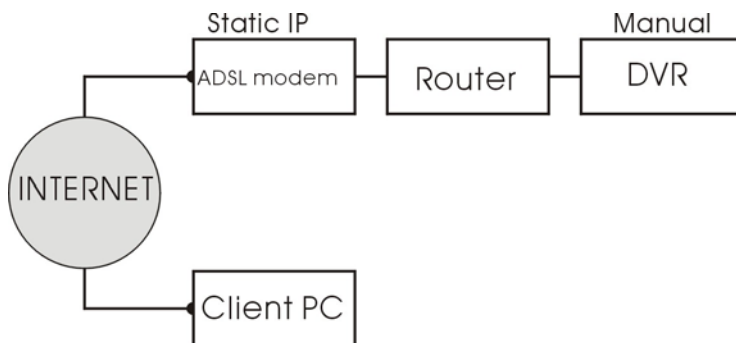
www.allthings.com.au



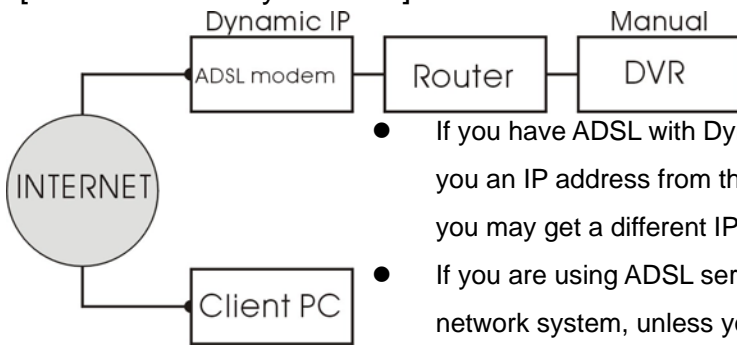
- Connect the Network cable of Cable Modem output to DVR



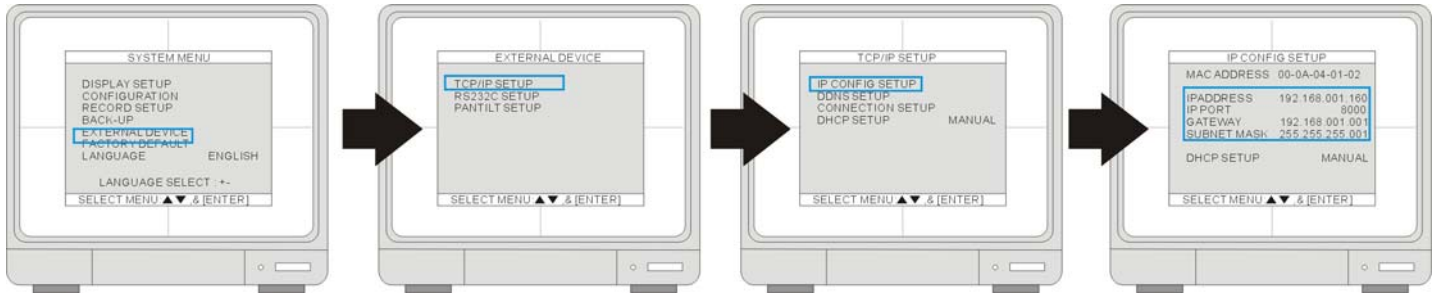
- Enter [SYSTEM MENU] ► [EXTERNAL DEVICE] ► [TCP/IP SETUP] ► [IP CONFIG SETUP]. Enter the IP address, gateway, subnet mask provided by your ISP. Then, assign a port number to the DVR, or you can use the default one as well.
- If you find that you cannot enter or change any addresses, check if DHCP is set to Automatic. Press MENU to go back to the previous page, [TCP/IP Setup], and then enter [DHCP SETUP]. Select DHCP MODE and press ENTER to switch DHCP to MANUAL
- In some very rare cases, we found the DVR did not support certain Static IP Addresses. If it happens, add a Router to the network system. The setup is the same as the next session, [Via ADSL with Dynamic IP.]



[Via ADSL with Dynamic IP]



- If you have ADSL with Dynamic IP address, the network administrator assigns you an IP address from their pool when you or your ISP reboots the network and you may get a different IP address from time to time.
- If you are using ADSL service with Dynamic IP, you must add a Router in the network system, unless your DSL MODEM has a built-in Router.



- Go to [EXTERNAL DEVICE] ► [TCP/IP SETUP] ► [IP CONFIG SETUP] to enter the virtual IP address for the DVR and the IPs of gateway and subnet mask. Then, assign a port number to the DVR or you can use the default port number as well. www.allthings.com.au
- If you find that you cannot enter or change any addresses, check if DHCP is set to Automatic. Press MENU to go back to the previous page, [TCP/IP Setup] and then enter [DHCP SETUP]. Select DHCP MODE and press ENTER to switch DHCP to MANUAL
- The Gateway IP is your router's IP address and the Subnet Mask should match the Subnet Mask IP of your router.

Tip: If you have other computers connected to the router, you can find out the Subnet Mask and Gateway information from the computers. From the computer desktop's Start Menu, choose Run. Type "cmd" to open a command prompt. In this command prompt, type "ipconfig" and hit "ENTER" and it'll show the computer's IP configuration. Your DVR should have the same IP configuration of Subnet Mask and Gateway as the computer, if they are connected to the same router. In addition, the first 3 segments of the local IP Address should be the same as well. For example, if your computer's local IP address is 192.168.1.100, your DVR's IP address should be 192.168.1.XXX.

- Set up the router to forward the port to the DVR. Please refer to 7-3 Router Setup for details.
- After the setup is completed and the DVR can be accessed from Internet, proceed to the DDNS setup. Since you may get different IP addresses from time to time, setting up the DDNS service allows you to log in from the remote by using a fixed code name, instead of using the IP addresses that are constantly changing.

Router setup

- There is a wide selection of routers in the market. They may be very different in terms of configuration and operation. Here is an example of how to set up a router. For details, please read your router's manual.

- First, connect a computer to the router for configuration.

In this example, the DVR's IP is set to 192.168.1.53 and its port number is 8000. The router model is PCI BLW-04G.

The screenshot shows the 'OnePage Setup' interface for the PCI BLW-04G router. The left sidebar contains a 'Main Menu' with options like 'OnePage Setup', 'Advanced', 'DHCP Settings', 'Access Control', 'Virtual Server', 'DMZ Host', 'Device Admin', 'Status Monitor', 'Dynamic Routing', 'Static Routing', 'Log', 'DDNS', 'Wireless', and 'Firmware Upgrade'. The main area is titled 'OnePage Setup' and contains the following fields:

- Host Name:** [PFC_SERVER] (Required by some ISPs)
- Domain Name:** [PFC_SERVER] (Required by some ISPs)
- Time Zone:** [GMT+0800 (Singapore, Taipei, Rocco)]
- Private IP Address:** [192.168.1.53] (MAC Address: 00-90-CC-6E-00-68)
- Subnet Mask:** [255.255.255.0]
- Wireless:**
 - MAC Address: [00-90-CC-6E-02-90]
 - SSID: [11g & 11n]
 - SSID Broadcast: [Enable]
 - Channel: [6] (Default: US)
 - WPA: Mandatory Disable [Go WPA Setup]
- WAN Connection Type:** [Static IP] (MAC Address: 00-90-CC-6E-00-68)
- Internet IP Address:** [211] [20] [82] [39]
- Subnet Mask:** [255] [255] [255] [248]
- Gateway:** [211] [20] [82] [33]
- DNS (Required):**
 - 1: [168] [95] [1] [1]
 - 2: [168] [95] [192] [1]
 - 3: [0] [0] [0] [0]

- Enter the router's setup and select Static IP or PPPoE.

1. [WAN connection type]

[Static IP setup]

The screenshot shows the 'Main Menu' of the PCI BLW-04G router. The 'OnePage Setup' option is highlighted with a red box.

WAN Connection Type

Internet IP Address:

Subnet Mask:

Gateway:

DNS (Required):

[Static IP] (MAC Address: 00-90-CC-6E-00-68)

Select the Internet connection type you wish to use

[211] [20] [82] [39]

[255] [255] [255] [248]

[211] [20] [82] [33]

1: [168] [95] [1] [1]

2: [168] [95] [192] [1]

3: [0] [0] [0] [0]

- Select the mode in WAN connection Type
- Enter the static IP Address, Subnet Mask, Gateway, DNS provided by your ISP
- Save the settings.

www.allthings.com.au

[PPPoE setup]



WAN Connection Type: (MAC Address: 00-90-CC-6E-00-68)
Select the Internet connection type you wish to use

User Name:
Password:

Fixed IP Address: Enable Disable

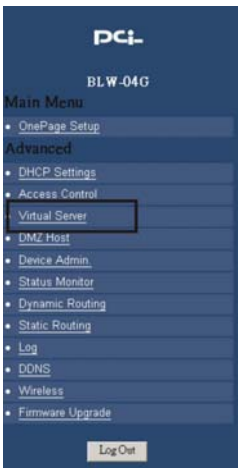
IP Address: . . .

Connect on Demand: Max Idle Time Min.

Keep Alive: Redial Period Sec.

- Select PPPoE in WAN connection Type
- Enter User Name and Password provided by your ISP
- The router will get the IP address upon connection. In this example, we get the IP address of 211.20.82.39.

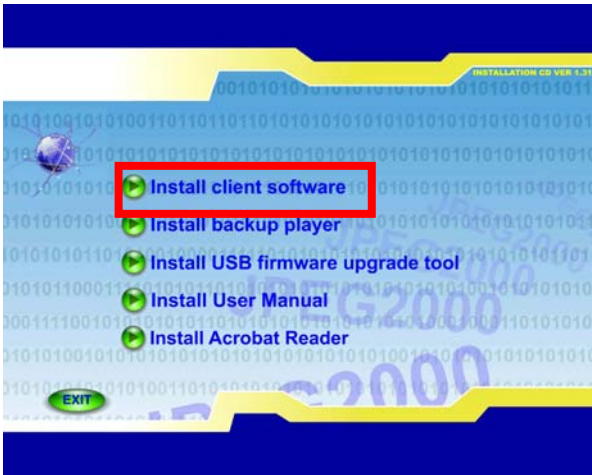
2. [Virtual server setup]



Ports		TCP	UDP	Redirect IP Address	Enable
1600	1600	<input checked="" type="checkbox"/>	<input checked="" type="checkbox"/>	192.168.1.180	<input checked="" type="checkbox"/>
8000	8000	<input checked="" type="checkbox"/>	<input checked="" type="checkbox"/>	192.168.1.53	<input checked="" type="checkbox"/>
		<input type="checkbox"/>	<input type="checkbox"/>	192.168.1.	<input type="checkbox"/>
		<input type="checkbox"/>	<input type="checkbox"/>	192.168.1.	<input type="checkbox"/>
		<input type="checkbox"/>	<input type="checkbox"/>	192.168.1.	<input type="checkbox"/>
		<input type="checkbox"/>	<input type="checkbox"/>	192.168.1.	<input type="checkbox"/>
		<input type="checkbox"/>	<input type="checkbox"/>	192.168.1.	<input type="checkbox"/>
		<input type="checkbox"/>	<input type="checkbox"/>	192.168.1.	<input type="checkbox"/>
		<input type="checkbox"/>	<input type="checkbox"/>	192.168.1.20	<input type="checkbox"/>

- Enter Virtual Server setup.
- Enter DVR's IP (192.168.1.53) and port number (8000). Enable the port and check both protocols of TCP and UDP. Save the settings before leaving this page.
www.allthings.com.au
- Once the routing table is setup, when the client software connects to 211.20.82.39 with PORT 8000, the router will forward the packets to its matching destination, 192.168.1.53, and thus connect the client to the DVR.

Client software Install and setup

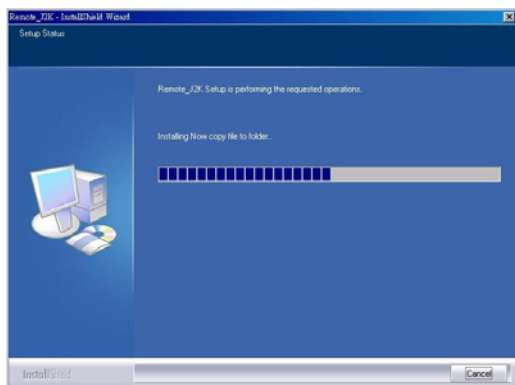
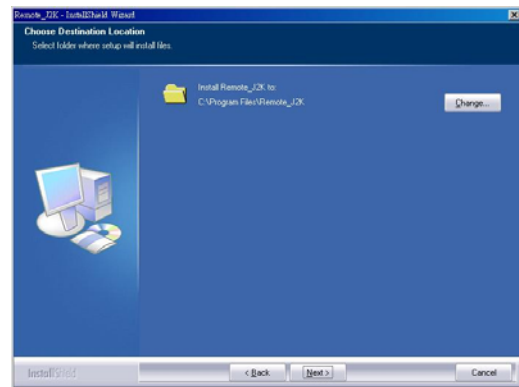
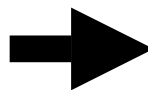
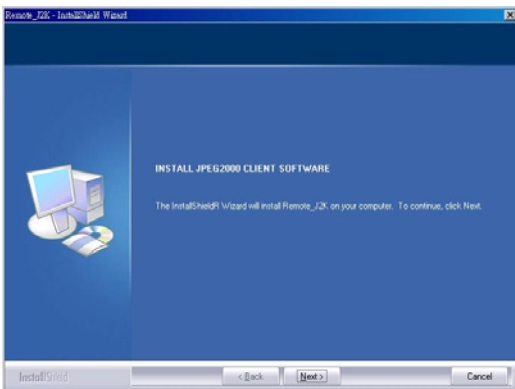


- Insert the Install CD into CD-ROM, and the computer will auto-run the Install program. We suggest installing the software on Windows XP or Windows 2000.

1. [Install Client software]

- Click [Install Client software]. www.allthings.com.au

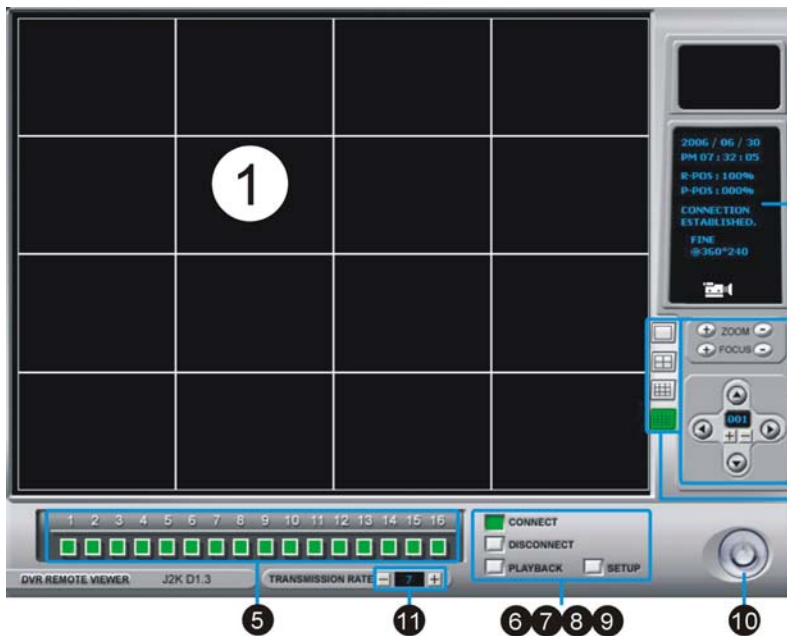
7-4-2 Install Client software



- Select a Destination Folder.
- When finished, the software will create a shortcut on the desktop.
- Click the shortcut to run the client software.

Software operation

[Remote viewer interface]



1.[Live Display]

- Remote DVR Live display

2.[Current Status]

- To show the current status

3.[PTZ Camera Control]

- To control PTZ Camera
Zoom/Focus/Direction

※ Remote Control of PTZ:

- 1) Set up PTZ at DVR first
- 2) Set up PTZ from the Client Software

4.[Screen Split]

- To select Full/4/9/16 split screen display

5.[Channel Selection]

- To select CAM1~16 when full or split screen display

6.[Connect]

- To select a DVR IP address from IP list for connection.

7.[Disconnect]

- To disconnect the DVR

8.[Playback]

- To enter playback

9.[Setup]

- To enter the setup

10.[Power]

- To close the remote program. The connection to the DVR will break off after the remote software is closed.

11.[Transmission Rate]

- To adjust transmission speed, range from 1~10, the bigger it is, the faster it is, and the image quality is comparatively worse.

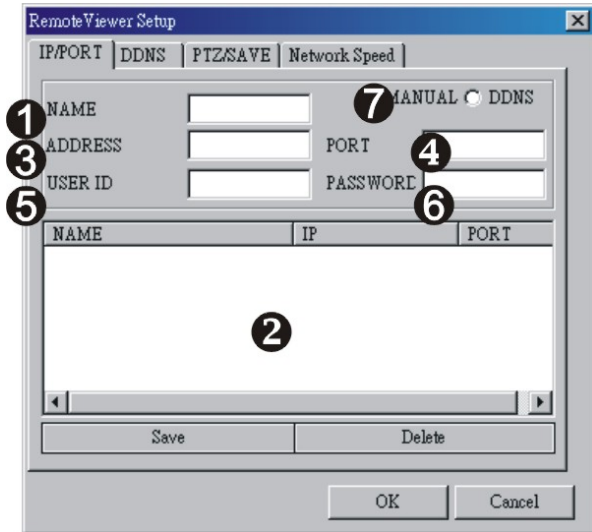


Two users' network access is available.

www.allthings.com.au

Client software setup

[IP/PORT]



1.DVR NAME]

- Enter the DVR's location or name

2.[IP LIST]

- Show the list of saved DVR IP addresses. If you are connecting to a DVR in this list, you can simply click it from the list, enter the DVR Admin's password, and press SAVE and then OK. Click CONNECT from Remote Viewer Interface to connect.

3.[IP ADDRESS]

- Enter the DVR's IP address
- If the DVR is connected to a router, you have to enter a real IP address, instead of using a virtue IP address.

4.[PORT]

- Enter the DVR's port number.

5.[USER ID]

- Enter the user ID as "**ADMIN**".

6.[PASSWORD]

- Enter the DVR Admin's password

www.allthings.com.au

7.[MANUAL/DDNS]

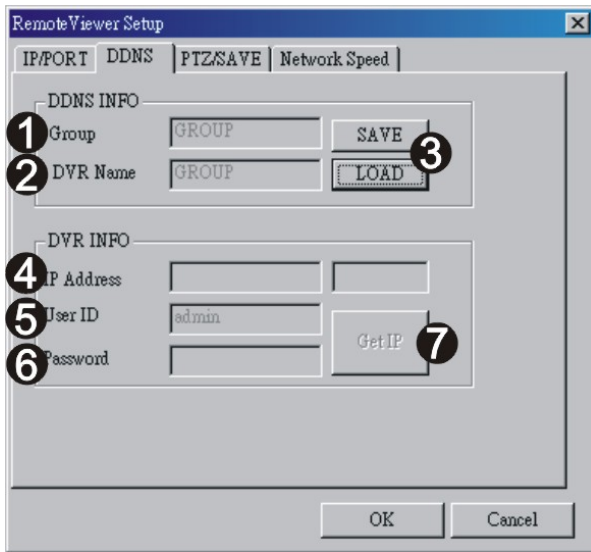
- If you have static IP address or are not using DDNS service, select MANUAL. If you are using DDNS service, select DDNS and click the tab DDNS on the top and enter DDNS setup page.

※ If you are setting up a new DVR to connect, follow the steps:

1. Enter the DVR's location or name.
2. Enter the DVR's IP address and port number.
3. Enter the user ID as "**ADMIN**" and DVR Admin's password
4. Press SAVE and then OK. Click CONNECT from Remote Viewer Interface

1. How to find out my real IP address: if you have computers connected to the router which the DVR is connected to, you can use your computer and go to <http://www.whatismyip.com> to find out your current IP address.
2. What is virtue IP address: The Internet Assigned Numbers Authority has reserved the following three blocks of the IP address space for private internet (local networks):
10.0.0.0 - 10.255.255.255
172.16.0.0 - 172.31.255.255
192.168.0.0 - 192.168.255.255
Also, IP addresses in the range of 169.254.0.0 -169.254.255.255 are reserved for Automatic Private IP Addressing. These IP's should not be used on the Internet.

[DDNS]



1.[Group]

- Enter Group name registered on DDNS Server. Please refer to **7-5 DDNS setup and operation for details**.

2.[DVR Name]

- Enter DVR name registered on DDNS Server. If the DVR name is entered and saved before, click LOAD to browse the list.

3.[Save/Load]

- Save: Save the setup into the DDNS list
- Load: Open the DDNS list. . Please see the following illustration [DDNS LIST] for details.

4.[IP Address]

- Show DVR's current IP address and Port number.

5.[USER ID]

- Enter ADMIN

6.[PASSWORD]

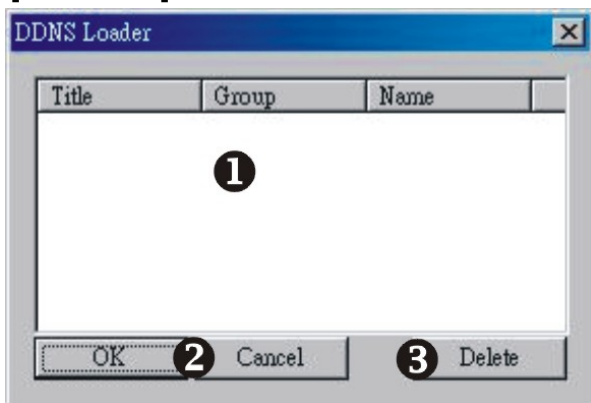
- Enter the DVR Admin's password

7.[Get IP]

- Click "Get IP" to get the current DVR IP address and port number from DDNS server.

8. Click OK and then click CONNECT from Remote Viewer Interface.

[DDNS LIST]



1.[DDNS SETUP LIST]

- Show all saved DDNS setup.

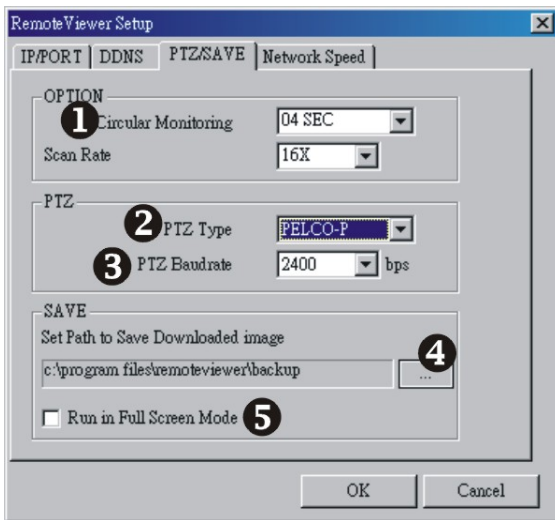
2.[OK/Cancel]

- Choose a certain setup in the list then click OK or Cancel.

3.[Delete]

- Delete a selected item from the list. allthings.com.au

[PTZ/SAVE]



1.[Circular Monitoring Interval]

- Set up a sequential switch interval.

2.[Scan Rate]

- Select a Fast forward (FF) speed of remote Playback.

3.[PTZ Type]

- Select the protocol used by your PTZ camera.

4.[PTZ Baudrate]

- Select a PTZ camera buad rate.

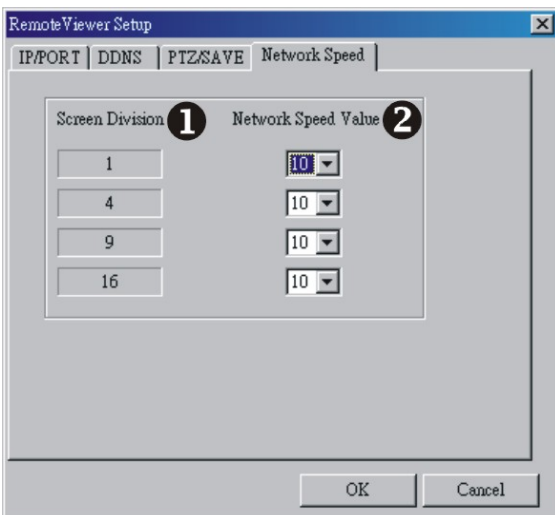
5.[Set Path to Save Reorded Images]

- Set a path to save the video clips. If you do not specify a path, the program will save all files to its default location, C:\Program Files\Remote_J2K.

6.[Run in Full Screen Mode]

- Check the box to enlarge the Interace to the full computer screen.

[Network Speed]



1.[Screen Division]

- Split mode.

2.[Network Speed value]

- To set up the transimission rate for split screens as default value.

allthings.com.au

7-4-5 PTZ control



1.[ZOOM]

- Use + / - to adjust PTZ Zoom IN/OUT.

2.[FOCUS]

- Use + / - to adjust PTZ Fous.

3.[PAN/TILT CONTROL]

- Click the direction buttons to control Pan and Tilt.

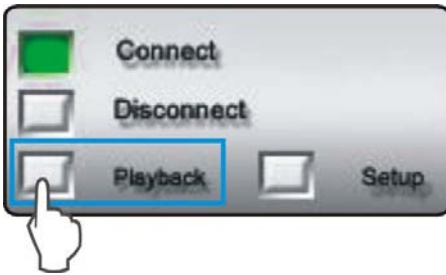
4.[PTZ ID]

- Show the PTZ ID that is under control.

5.[+/-]

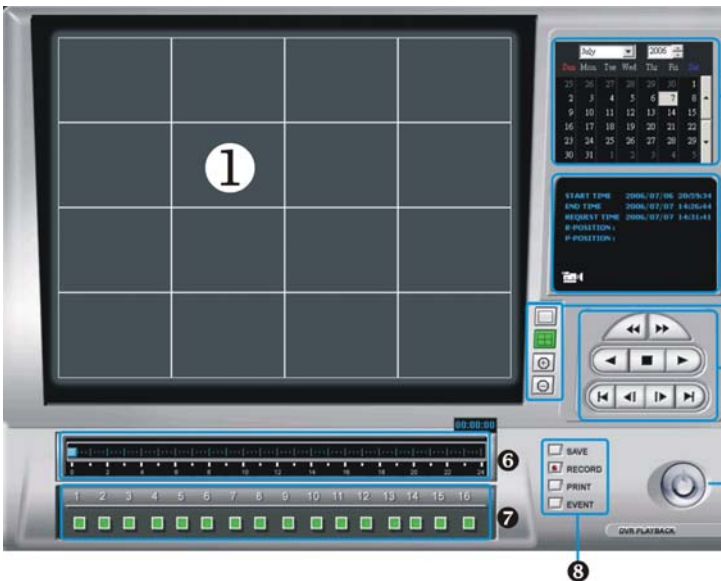
- Click +/- to select a PTZ ID.

Remote playback



- When the DVR is connected, click [PLAYBACK] to enter Playback interface.

[Remote Playback Interface]



1.[Playback Picture]

- To show the playback video

2.[Time/Date Selection]

- To select time/date of playback

3.[Record and Playback Status]

- START – To show the record START Time/Date

- END – To show the record END Time/Date

- REQUEST – To show the record DISPLAY Time/Date

4.[Screen Split]

- To select Full/4 split screen display

5.[Search Button]

- To operate the search function

6.[Time Selection]

- To select the time of playback

7.[Channel Selection]

- To select CAM1~16 when full screen display

8. [Auxiliary Function Button]

- SAVE : To save image as JPEG file to PC when the playback is paused.

PRINT : To print out the picture when the playback is paused.

EVENT : To show the DVR's event list.

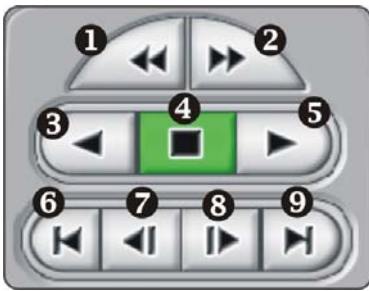
RECORD : To save the record image to the assigned path as AVI format.

- User can play AVI file by Windows Media Player.

9.[Power]

- To close the playback program and return to Remote Viewer.

[Search button]

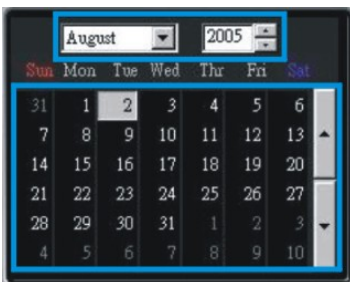


1. Fast Reward (RW)
2. Fast Forward (FF)
3. RW (Speed 1X)
4. Stop / Pause
5. Playback (Speed 1X)
6. Go to the beginning of recording
7. Jump to the previous hour
8. Jump to the next hour
9. Go to the end of recording

[Remote Playback Operation]



- Drag the mouse over the time bar to select a playback time.



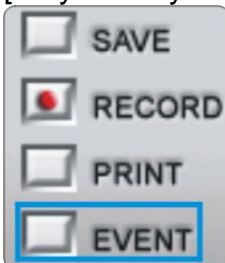
- Select a Year/Month/Day to playback.

allthings.com.au



- Click RW or PLAYBACK to start the playback
- If the DVR cannot find the selected playback date and time, the playback will start from the next video clip.

[Playback by EVENT LIST]



- You can search a playback video clip by EVENT LIST. The events include Video Loss, Motion and Alarm.
- Press "EVENT"

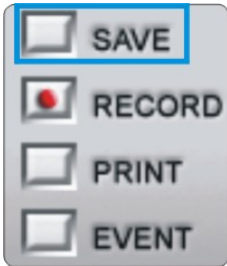
Channel	Alarm Type	Date/Time
CH1	no loss -> loss	[2004/08/28] 11:01:51
CH2	no loss -> loss	[2004/08/28] 11:01:54

- Select an event from Event List and click twice to start playback

Back up via Client software

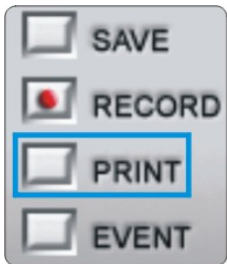
- Save the recorded data as single JPEG picture or AVI format.

[Save the recorded data as single JPEG picture]



- Press "STOP" right before where you want to save and press "SAVE".
- The picture will be saved to the assigned path which you set up in **7-4-4 [Remote software setup] ▶ [PTZ/SAVE]**

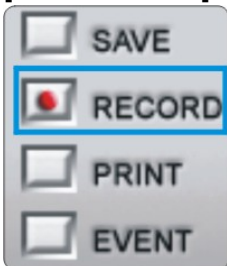
[print the recorded data]



- Press "STOP" and "PRINT" to print out the picture.

allthings.com.au

[SAVE AS AVI]



- During playback, press "RECORD" to start saving to AVI and press "RECORD" again to stop.
- A message "Saving OK" pops up when you successfully save the video to AVI.

DDNS setup and operation

DDNS SERVER setup



JPEG2000 DDNS SERVER
Have a nice day

HOME
REGISTER
F & Q

DDNS REGISTER

GROUP	<input type="text"/>
Password	<input type="text"/>
LOG IN	Forget password

Copyright © 2005 JPEG2000

1. Connect to DDNS SERVER(<http://www.j2kdvr.com> or <http://59.124.143.151>) by IE browser
 - Select [REGISTER] to register a new account



JPEG2000 DDNS SERVER
Have a nice day

HOME
REGISTER
F & Q

DDNS REGISTER

New User

GROUP	<input type="text"/>
User Password	<input type="text"/>
Confirm Password	<input type="text"/>
E-mail	<input type="text"/>
OK	

Copyright © 2005 JPEG2000

2. Add a new account
 - Group: Add a new user name
User Password: Add user password
Confirm Password: Confirm the password
E-mail: Add an Email address for the password reminders

www.allthings.com.au



GROUP	<input type="text"/>
Password	<input type="text"/>
LOG IN	Forget password

3. Enter group name and password to LOGIN DDNS function.

DVR LIST

DVR Name [Backup Player](#) [Add DVR](#) [User logout](#)

Number	DVR Name	MAC Address	IP	PORT	Last Modified Year/M / D H : M	Web/Backup/Edit/Delete
No DVR DATA						

4. Select "ADD DVR" to add DVR information

DVR Name	<input type="text"/>
MAC Address	<input type="text"/>
IP	<input type="text"/>
Port	<input type="text"/>
<input type="button" value="OK"/>	

5. Add DVR information:

www.allthings.com.au

- DVR NAME: Set a DVR name
MAC ADDRESS: Enter the DVR's MAC address. DVR's MAC address can be found in DVR's [SYSTEM MENU] ► [EXTERNAL DEVICE] ► [TCP/IP SETUP] ► [IP CONFIG SETUP]
IP: Enter the DVR's current IP address
PORT: Enter the DVR's port number
✂It is required to enter DVR NAME and MAC ADDRESS. DVR's IP and PORT number can be left blank..
- Press [OK] to save the settings

DVR LIST

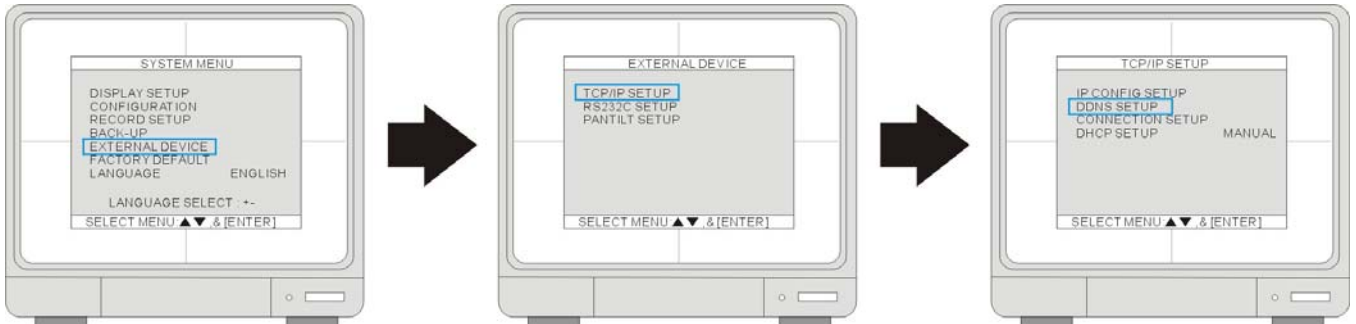
DVR Name [Backup Player](#) [Add DVR](#) [User logout](#)

Number	DVR Name	MAC Address	IP	PORT	Last Modified Year/M / D H : M	Web/Backup/Edit/Delete
1	demo	000A01020304				Web/Backup/Edit/Delete

6. Edit and delete DVR information

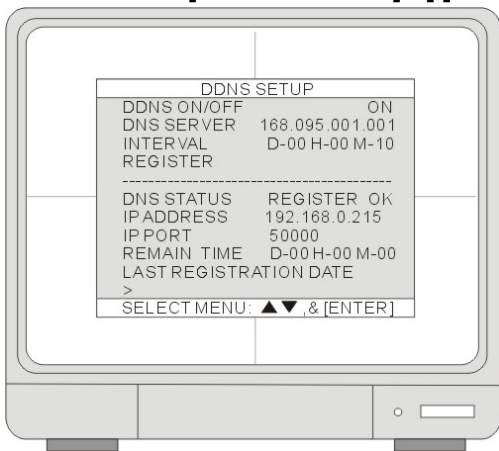
- EDIT: To edit the DVR information
DELETE: To delete the DVR information
-

DVR setup



1. The DVR setup is a onetime effort. First, make sure your DVR can be accessed over the Internet. Please refer to **7-2 Network installation and setup** for details.

2. Go to **[SYSTEM MENU] ▶ [EXTERNAL DEVICE] ▶ [TCP/IP SETUP] ▶ [DDNS SETUP]**

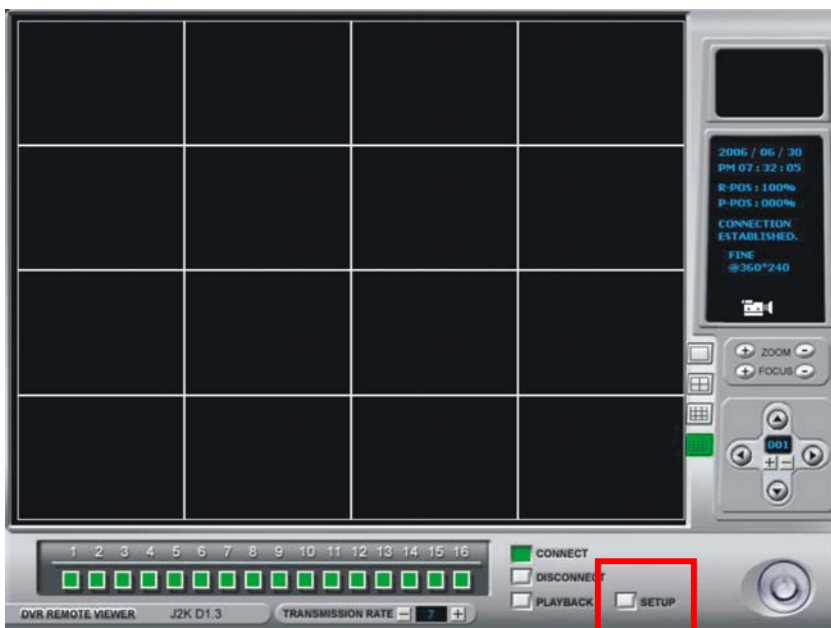


DDNS IP: 59.124.143.151

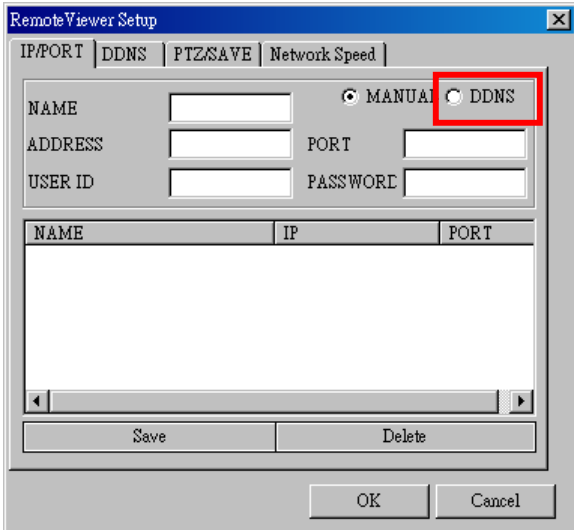
- **DDNS ON/OFF:** Press ENTER to turn ON the DDNS service.
- **DNS SERVER:** Enter the DDNS Server IP address.
- **INTERVAL:** Set an interval for the DVR to auto-update its IP address to DDNS server. (D- day / H- hour / M- minute)
- **REGISTER:** Connect to DDNS server and register the DVR information to DDNS database
- **DNS STATUS:** Indicate the current status of DDNS connection
- **IP ADDRESS:** Indicate the current IP address in DDNS server
- **IP PORT:** Indicate the current IP address in DDNS server
- **REMAIN TIME:** Indicate the remaining time to update the IP address
- **LAST REGISTRATION DATE:** Indicate the last date of registration

www.allthings.com.au

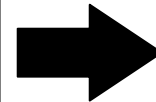
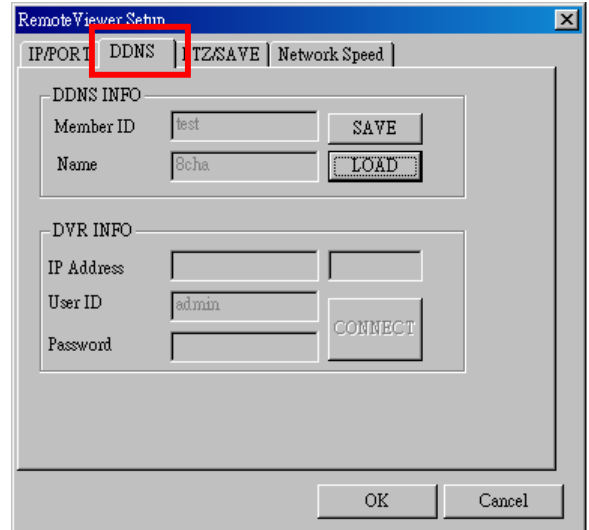
7-5-3 Client software setup



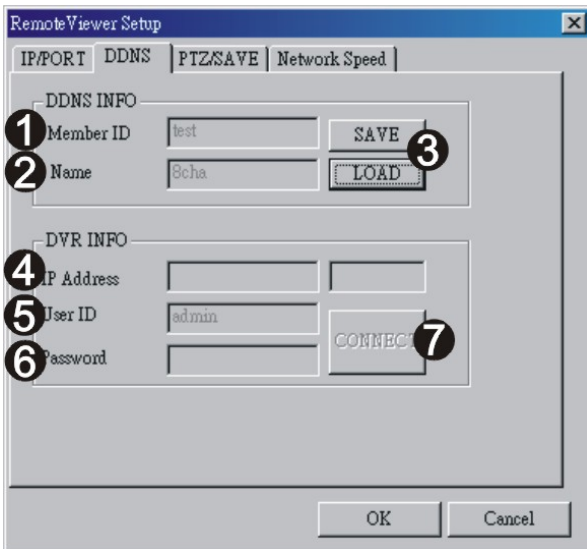
1. Run Client software and enter SETUP



2. Select DDNS in [IP/PORT] setup



3. Go to DDNS setup

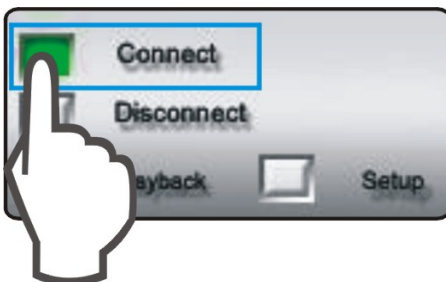


[DDNS INFO]

- **GROUP:** Enter Group name registered on DDNS Server.
- **DVR NAME:** Enter DVR name registered on DDNS Server. If the DVR name is entered and saved before, click LOAD to browse the list.
- **Save/Load:**
 Save: Save the setup into the DDNS list.
 Load: Open the DDNS list.

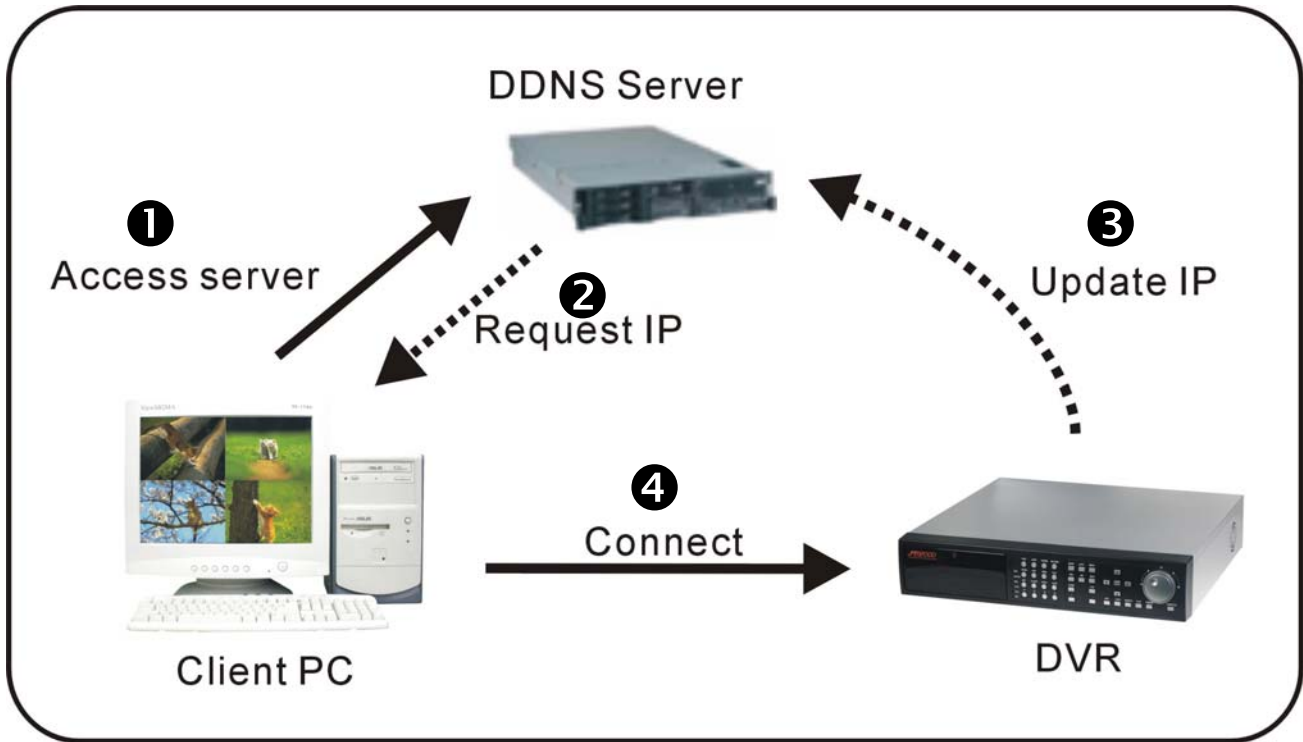
[DVR INFO]

- **Get IP:** Click "Get IP" to get the current DVR IP address and port number from DDNS server.
- **IP Address:** Show DVR's current IP address and Port number allthings.com.au
- **User ID:** Enter ADMIN
- **Password:** Enter the DVR Admin's password and click OK to complete the DDNS setup.



- Click "CONNECT" to get the connection with DVR

Configuration of DDNS connection



1. DVR connect to DDNS server automatically and update the IP address by itself.
2. The client accesses to DDNS server and requests IP address from DDNS server.
3. DDNS server replies the DVR's IP address and port number.
4. Client PC connects to DVR.

Users can also access to the DVR from Internet Explorer for remote viewing, remote backup, and playback the backup file. Log on to DDNS server and go to the DVR List

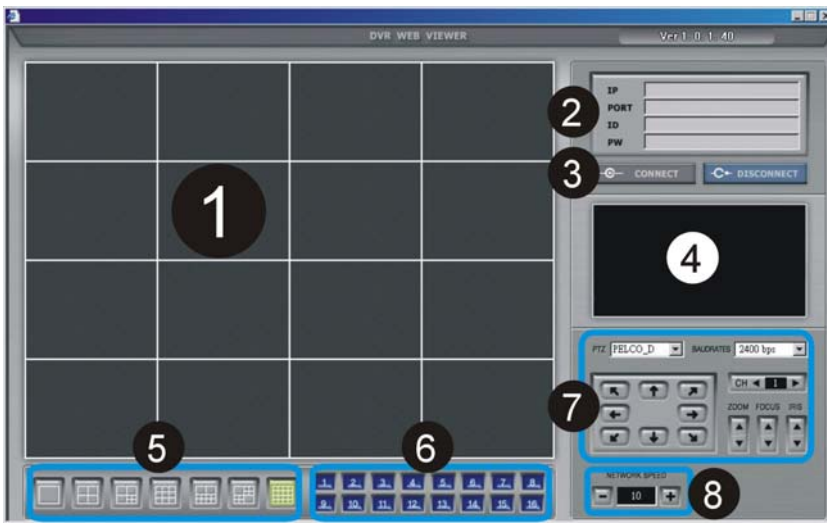
7-5-5 Remote Live View via IE Browser

- Click WEB to link to your DVR

DVR LIST

DVR Name OK Backup Player Add DVR User logout

Number	DVR Name	MAC Address	IP	PORT	Last Modified Year/M/D H:M	Web/Backup/Edit/Delete
1	demo	000A01020304				Web/Backup/Edit/Delete



1.[Live picture]

- Shows the live pictures of DVR

2.[DVR info]

- IP: Indicate the IP address of DVR
- PORT: Indicate the PORT of DVR
- ID: Use ADMIN
- PW: Enter the ADMIN's password

3.[CONNECT/DISCONNECT]

- CONNECT: Connect to DVR and get the live picture
- DISCONNECT: Interrupt the connection with DVR

4.[Status Window]

- Shows the current status of connection

5.[Selection of multi screen]

- Switch to the different modes of multi-screen displays

6.[Channel selection]

- Select a single channel for full screen display

7.[PTZ control]

- Control PTZ camera

8.[Scalability]

- To adjust transmission speed. The bigger it is, the faster it is, and the image quality is comparatively worse.



- PTZ: Select the protocol
- BAUDRATE: Select the baud rate
- CH: Select the ID of PEZ camera
- ZOOM: Zoom in/out
- FOCUS: Focus near/far
- IRIS: IRIS open/close

Web Network Backup

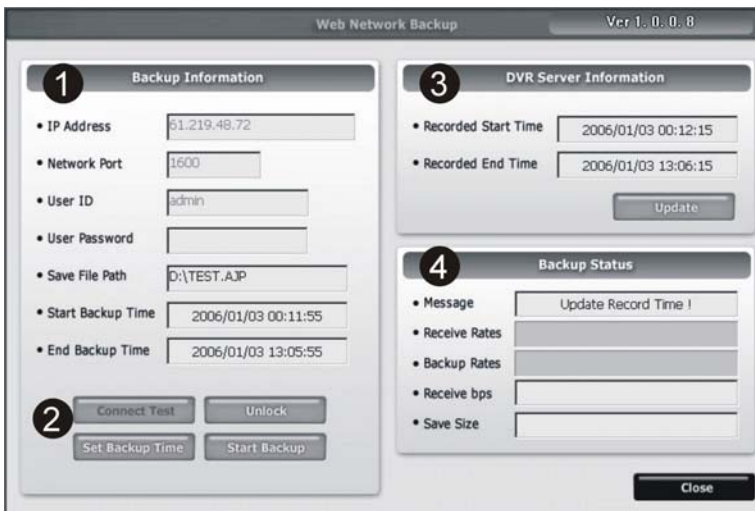
DVR LIST

DVR Name [Backup Player](#) [Add DVR](#) [User logout](#)

Number	DVR Name	MAC Address	IP	PORT	Last Modified Year/M / D H : M	Web/Backup/Edit/Delete
1	demo	000A01020304				Web/Backup/Edit/Delete

- Click "Backup" to open the web page "Web Network Backup"

allthings.com.au



1.Backup Information:

- IP Address: Enter the IP address of DVR
- Network Port: Enter the port of DVR
- User ID: Enter "Admin"
- User Password: Enter Admin's password
- Save File Path: Set a path to save the backup file (This function is active only when the connection is established)
- Start Backup Time: The start time of file backup (This function is only active under the connection is established")
- End Backup Time: The end time of file backup (This function is only active under the connection is established")

2. Function setup:

- Connect Test: To test the connection status
Unlock: To get the record start/End time of DVR
Set Backup Time: Set the start/end time, size and path of file backup
Start Backup: Active the backup function

3. The information of DVR Server:

- Recorded Start Time: Indicate the recorded start time
Recorded End Time: Indicate the recorded end time
- Update: Update the recorded time

4. Backup Status

- Message: Indicate the backup status
Receive Rate: Indicate the percentage of backup image received
Backup Rate: Indicate the completed percentage of backup image received
Receive bps: Indicate the bps of backup image received
Save Size: Indicate the size of backup image saved

7-5-7 Backup Procedure

1. Select [Connect Test] to test the status to DVR connection
2. Select [Unlock] to get the record start/End time of DVR
3. Select [Set Backup Time] to setup the backup function

allthings.com.au

Backup Information

- Recorded Start Time: 2006/01/03 04:51:32
- Recorded End Time: 2006/01/03 17:46:36
- Save File Path: D:\TEST.AJP
- Maximum Save File Size: 30 MB
- Start Backup Time: Year: 2006, Month: 1, Day: 3, Hour: 4, Minute: 51
- End Backup Time: Year: 2006, Month: 1, Day: 3, Hour: 17, Minute: 46

- 1 Indicate the recorded start/end time
- 2 Click [Find] to set the path for saving the backup file
- 3 Set the file size of backup file (30~700MB)
- 4 Set the start/end time of file backup

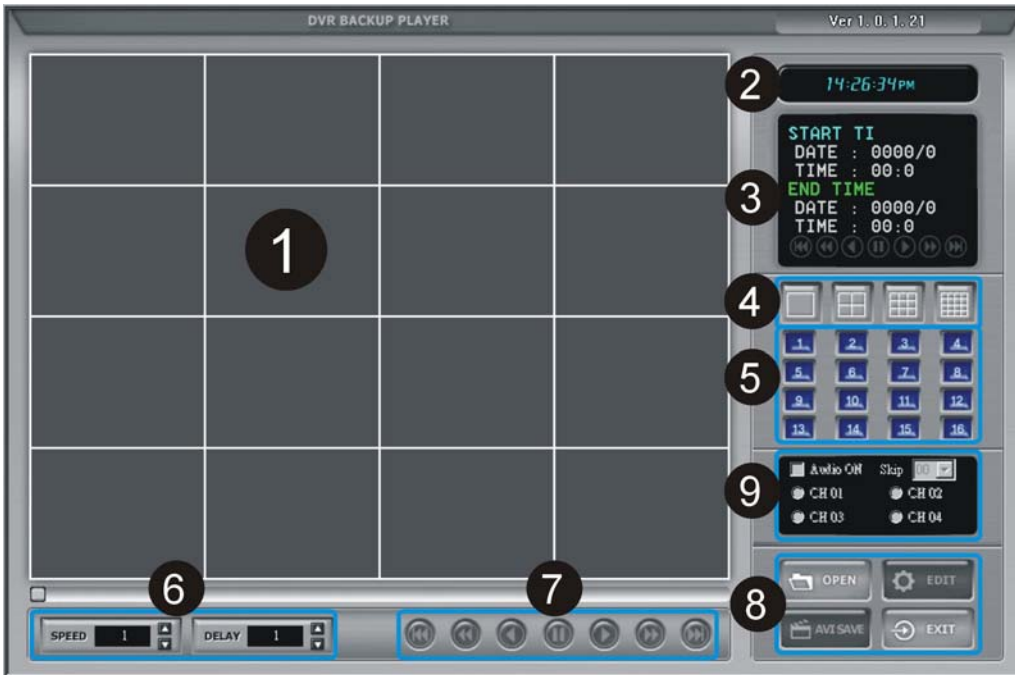
4. Click [Apply] to apply all setup
5. Select [Start Backup] to active the backup function (User can stop anytime during backup)

Web backup player




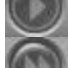

DVR LIST

DVR Name	<input type="text"/>	OK	Backup Player	Add DVR	User logout	
Number	DVR Name	MAC Address	IP	PORT	Last Modified Year/M/ D H : M	Web/Backup/Edit/Delete
1	demo	000A01020304				Web/Backup/ Edit / Delete

- Click [Backup Player] to open the web page of "Backup Player"



- Display the backup image
- Indicate the present time of monitoring
- Indicate the start/end time of backup
- Switch to the different modes of multi-screen
- Channel selection: Ch1~Ch16
- SPEED: Adjust the speed of fast forward DELAY: Adjust the speed of reward
- Function bar on playback:

-  To the beginning
-  Fast Rewind ◦
-  Rewind
-  Pause
-  Forward
-  Fast Forward
-  To the end



8. Function keys:


- OPEN: Open the backup file
- EDIT: Edit the backup image
- AVI SAVE: To save the AVI file
- EXIT: Log out the program

9. audio options:

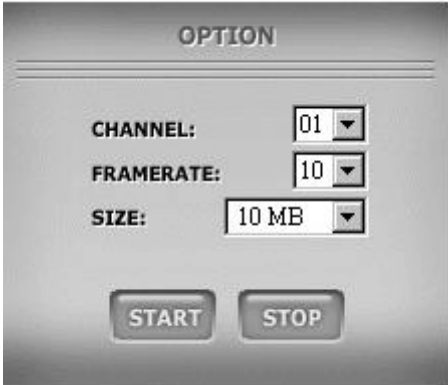
- ON: To start the audio function
- Ch1~4: to select the channel with audio

7-5-9 Save AVI file

1. Click  to open the backup file and select  single channel

2. Click  to open the AVI SAVE function

allthings.com.au

3.  CHANNEL: Select a single channel
FRAMERATE : Set the frame rate
SIZE: Set the file size of AVI SAVE
START: Start AVI SAVE
STOP: Stop AVI SAVE

※ The AVI file path will be saved under C:\WEB_BACKUP
